



**OWNER'S MANUAL**  
**Home Series**  
**H-350**



1330 Pigeon Rd  
Bad Axe, MI 48413  
Toll Free: 866-712- 0606  
Fax: 989-269-5902

[www.global-poolproducts.com](http://www.global-poolproducts.com)



## HOME SERIES POOL LIFTS

### TABLE OF CONTENTS

<b>INTRODUCTION</b>	<b>PAGE - 3</b>
<b>ADA GUIDELINES FOR PLACEMENT</b>	<b>PAGE - 4</b>
<b>24 VOLT BATTERY SYSTEM/WITH CONTROLS</b>	<b>PAGE - 5</b>
<b>HOME SERIES OPERATING INSTRUCTIONS</b>	<b>PAGE - 5</b>
<b>UNIT MAINTENANCE AND CARE</b>	<b>PAGE - 6</b>
<b>TROUBLESHOOTING</b>	<b>PAGE - 7</b>
<b>WARRANTY INFORMATION</b>	<b>PAGE - 9</b>
<b>WARRANTY REGISTRATION</b>	<b>PAGE - 12</b>
<b>NEW CONSTRUCTION INSTALLATION</b>	<b>PAGE - 13</b>
<b>ASSEMBLY MANUAL</b>	<b>PAGE - 19</b>
<b>SPECIFICATION SHEETS</b>	<b>PAGE - 25</b>



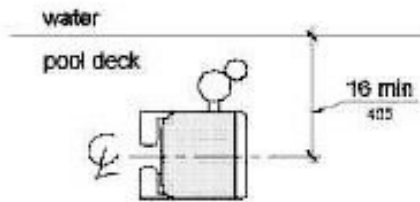
## INTRODUCTION

**“Committed to Engineering and Manufacturing World Class Products.”**

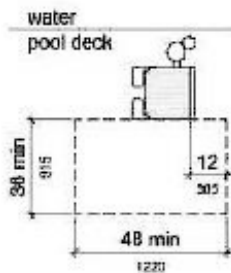
Global Pool Products is located in Mid-Michigan. Global Pool Products prides itself in manufacturing top-of-the-line quality aquatic pool equipment and products. Global Pool Products' key staff has a century of combined industry experience and we take pride in each and every product that we build. Our products are made in the United States. Global Pool Products uses only the finest materials and processes to provide our customers with the highest quality products while still maintaining a price competitive edge.

## ADA GUIDELINES FOR POOL LIFT PLACEMENT

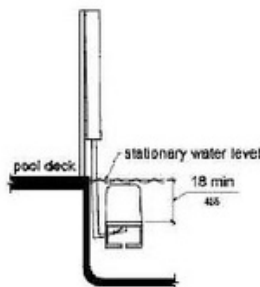
1. Pool Lift Location. Pool lifts shall be located where the water level does not exceed 48 inches (1220 mm).
2. Seat Location. In the raised position, the centerline of the seat shall be located over the deck and 16 inches (405 mm) minimum from the edge of the pool. The deck surface between the centerline of the seat and the pool edge shall have a slope not steeper than 1:48.



3. Clear Deck Space. On the side of the seat opposite the water, a clear deck space shall be provided parallel with the seat. The space shall be 36 inches (915 mm) wide minimum and shall extend forward 48 inches (1220 mm) minimum from a line located 12 inches (305 mm) behind the rear edge of the seat. The clear deck space shall have a slope not steeper than 1:48.



4. Submerged Depth. The lift shall be designed so that the seat will submerge to a water depth of 18 inches (455 mm) minimum below the stationary water level. To make sure the lift has enough clearance the lift should be installed at a location with 48" of water depth.



## 24 VOLT BATTERY SYSTEMS WITH CONTROLS

All of Global Pool Products' Home Series Lifts are equipped with a sealed 24 volt battery that is rechargeable. Along with a charging unit, hand held controller and control compartment. The 24 volt battery mounts right above the control compartment and the battery simply snaps in. The battery should be charged for 5-8 hours prior to the 1st use.

The unit is operated by the 2 button easy to use controls. The arrow pointing down will lower the lift when depressed, the arrow that points up will raise the unit when depressed. If you hear the low battery indicator tone "Do Not Use the Lift" remove the battery from the unit and recharge the battery.

**RECHARGING THE BATTERY:** Remove battery from the unit by unclipping from the control compartment. When setting the battery down, place it horizontally as to avoid contacting the battery terminals with anything conductive, and damaging the battery. Place the battery in the charging unit. When the battery is charging the light will be illuminated amber/orange, indicating charging. Once fully charged the charge light will turn green, indicating fully charged and ready for use in your Home Series pool lift.

## HOME SERIES POOL LIFT OPERATING INSTRUCTIONS

Insert the battery into the lift and push to snap into place. Turn the emergency stop button on top of the unit clockwise to ensure it is not in the "STOP" position.

Prior to using the Home Series Pool Lift, perform a test run of the lift while empty. Once the test is completed and the lift is in its original position, ensure that the arm rests are lifted to the up position and the seatbelt is unbuckled. You are now ready to use your lift.

Once positioned in the seat, buckle the seatbelt and make sure it is snug across your lap. Lower the arm rests if installed. Always confirm the pathway is clear of any obstacles before operating the lift.

Locate the 2 button handheld controller. Once comfortably and safely seated in the lift, press and hold the down arrow to enter the pool. You do not have to finish the down cycle and may exit the lift whenever you are submerged into the water and are comfortable. Once you've entered the water, unbuckle the seatbelt, raise the arm rests if installed, and slide off the seat.

When finished with your pool activity, make sure the seat is lowered as much as necessary to allow you to easily slide back into the chair. Once seated, buckle the seatbelt, and lower the arm rests. To raise the lift chair out of the pool, press and hold the up arrow. It is important to continue holding the up arrow until the lift comes to a complete stop, concluding the up cycle. Once the cycle has completed, it is safe to unbuckle the seatbelt and raise the arm rests to exit the unit.





## MAINTENANCE

Regular servicing will help prolong the life of your lift. Routine maintenance and cleaning is very important. The following is a routine maintenance you should follow.

### Daily

- o Check and charge battery if needed
- o Test for normal operations
- o Inspect your lift
- o Clean and dry the lift and seat with clean water
- o Cover lift after use

### Weekly

- o Overview Daily Checklist
- o Wipe away any surface rust with household spray cleaner
- o Clean tough stains with Scotchbrite pad and wipe clean

### Monthly

- o Inspect all connections, frame, seat, etc.
- o Clean battery connections
- o Clean metallic surfaces with a wax cleaner

The maintenance provision of the ADA states that "a public accommodation shall maintain in operable working condition those features of facilities and equipment that are required to be readily accessible to and usable by persons with disabilities."



## TROUBLESHOOTING GUIDE

### 1. Testing the Battery Charger:

- Use a voltmeter to test the battery charger. It should read between 27.5 and 30 volts.
- Ensure you are not using the control box port as a charger. The control box port will not charge the battery or operate the lift without a functional battery.

### 2. Testing the Battery:

- Use a voltmeter to test the battery. It should read between 26 and 28 volts.
- If the battery measures less than 26 volts, the system may exhibit slight movement but will not operate fully.
- If the battery cannot charge higher than 25 volts, replace the battery.

### 3. Checking the Emergency Stop Button:

- Verify that the red emergency stop button is in the up position.

### 4. Inspecting the Control Box:

- Check the tabs inside the control box to ensure they are lifted and making good contact with the battery.
- Ensure there is no visible damage and that the tabs are clean.

### 5. Connecting the Handset:

- Ensure the handset is plugged into the correct port on the right side, located under the control box. Push the plug all the way in so no gaps are visible.

### 6. Connecting the Actuator:

- Confirm that the actuator is securely plugged into the left port of the control box.
- For non-rotational lifts, the middle port is not used. For rotational lifts, the motor should be plugged into the middle port.



## TROUBLESHOOTING GUIDE

### **Important Note:**

Do not open the components of the lift for internal repairs. Most components are hardwired or sealed. Opening them will void the warranty and may cause further damage to the system.

### **7. Initial Diagnostic Checks:**

- After performing the initial checks, determine if the lift is making any sound when buttons are pressed on the handset.
  - If there is no sound: Replace the handset.
  - If the handset has been replaced and there is still no sound: Replace the control box.
  - If the lift makes a clicking sound but does not move: Replace the actuator.

### **8. Rotational Lift Specific Checks:**

- If the lift is not moving up and down or rotating left to right:
  - Switch the plugs under the control box.
  - If the lift still does not move up and down, replace the actuator.
  - If the lift is not rotating, replace the motor.

### **9. Sending Components for Testing:**

- If the issue persists and you are unable to identify the faulty component, you can send the system to us. We will test each component to determine the cause of the problem.



## Global Pool Products Pool Lift - Warranty Information

The Home Series lift has a 2 year structural limited warranty. Global Pool Products warrants to the retail end user only products manufactured by Global Pool Products, when properly installed in accordance to the assembly and installation instructions, and when the equipment is properly used and maintained, be free from material defects and workmanship as stated below:

- Warranty starts from date of original purchase
- Metal structure (not including powder coat) – 2 years limited structural warranty
- Actuator, controls, and battery – 1 year from date of purchase

This warranty does not cover damages to **ANY** of our lifts due to accident, abuse, negligence, misuse, damage by improper use of chemicals, fading, ice damage, fire, rust beyond structural damage( does not cover cosmetic rust), exceeding the weight capacity for model purchased, failure to install or to assemble the product in accordance with the installation and assembly instructions, normal wear and tear from day to day use, not maintained properly, if unit is altered or repaired without written approval of Global Pool Products – All Warranties are Void.

To commence the warranty claim process of a Global Pool Products product, in writing provide place of purchase along with the product name and description, date of installation, and a detailed description of the defect, along with a photo of the entire product and claimed defect. Prior to a 30 day period after receiving the written warranty claim by Global Pool Products and barring any unforeseen delays, the claimant will be notified of Global Pool Products' decision regarding the claim.

If the request made by Global Pool Products for the product to be returned to its factory or distributor of choice for inspection and/or repair, purchaser will be liable for "Freight Prepaid". Global Pool Products (at its option) will replace or repair the defective item and deliver the repaired product or replacement to the buyer of the product, freight prepaid by the purchaser to the destination on file in regards to the original order. Parts and products returned for replacement to Global Pool Products shall remain the property of Global Pool Products under this limited warranty.

A new warranty period shall not be established for any repaired or replaced products. Replaced or repaired products will remain under warranty only for the remainder of the original warranty period for the original product purchased. No person or organization is authorized to make any other specific or implied warranties on behalf of Global Pool Products.

THE WARRANTIES ARE IN LIEU OF ALL OTHER WARRANTIES, EXPRESSED OR IMPLIED, WHICH ARE HEREBY DISCLAIMED AND EXCLUDED, INCLUDING WITHOUT LIMITATION ANY WARRANTY OF MERCHANTABILITY OR FITNESS FOR A PARTICULAR PURPOSE OR USE.

IN NO EVENT SHALL GLOBAL POOL PRODUCTS BE LIABLE FOR ANY INCIDENTAL, CONSEQUENTIAL, INDIRECT, SPECIAL EXEMPLARY OR PUNITIVE DAMAGES OR LOST PROFITS FROM ANY BREACH OF THIS LIMITED WARRANTY. THE SOLE AND EXCLUSIVE REMEDY OF THIS WARRANTY IN REGARDS TO GLOBAL POOL PRODUCTS'S PRODUCT SHALL BE LIMITED TO REPLACEMENT OR REPAIR AT A GLOBAL POOL PRODUCTS'S FACILITY OR A DULY APPOINTED DISTRIBUTOR'S LOCATION OR AT A GLOBAL POOL PRODUCTS'S DESIGNATED LOCATION. IN NO EVENT SHALL GLOBAL POOL PRODUCTS LIABILITY EXCEED THE ENTIRE AMOUNT PAID TO GLOBAL POOL PRODUCTS BY THE ORIGINAL PURCHASER IN REGARDS TO THE DEFECTIVE OR FAILED PRODUCT.

NO REPRESENTATIVE OF GLOBAL POOL PRODUCTS SUCH AS AGENTS, DISTRIBUTORS AND DEALERS HAVE THE AUTHORITY TO ALTER IN ANY FASHION THE TERMS OF THIS WARRANTY AND GLOBAL POOL PRODUCTS IS "NOT" RESPONSIBLE FOR REPRESENTATION, UNDERTAKING, OR WARRANTY MADE BY ANY OTHER PERSON BEYOND THE WARRANTIES EXPRESSED SET FORTH IN THIS WARRANTY.



## Warranty Procedure

**Warranty Claims** shall be submitted to Global Pool Products by the distributor which originated the sale with Global Pool Products or directly to Global Pool Products.

All RMA (Return Materials Authorization) documents shall be requested by and issued only to the distributor which originated the sale or directly to Global Pool Products.

Global Pool Products shall determine warranty coverage validation and replacement parts or repair, which were directed to the distributor which originated the sale or that are initiated directly with Global Pool Products.

Warranty claims received from end users by Global Pool Products shall be re-directed to the distributor which originated the sale with Global Pool Products or processed directly by Global Pool Products.





## WARRANTY REGISTRATION

### **PURCHASED BY:**

Company Name: \_\_\_\_\_ Contact: \_\_\_\_\_

City: \_\_\_\_\_ State: \_\_\_\_\_ Zip: \_\_\_\_\_

Phone: (\_\_\_\_) \_\_\_\_\_

### **DEALER:**

Name: \_\_\_\_\_ Phone Number \_\_\_\_\_

City: \_\_\_\_\_ State: \_\_\_\_\_ Zip: \_\_\_\_\_

Phone: (\_\_\_\_) \_\_\_\_\_

Model: \_\_\_\_\_ Serial Number: \_\_\_\_\_

Color: \_\_\_\_\_ Purchase Price: \$ \_\_\_\_\_ Date Purchased: \_\_\_\_\_

I have read and I accept the warranty terms.

Signature: \_\_\_\_\_ Date: \_\_\_\_\_

**This card must be completed and returned to Global Pool Products within 30 days of purchase date to assure coverage.**

**Please mail to: Global Pool Products, 1330 Pigeon Rd, Bad Axe, MI 48413 or**

**Email to: [warranty@globalpoolprod.com](mailto:warranty@globalpoolprod.com)**



## **HOME SERIES LIFTS H-350**

4-POINT ANCHORING SYSTEM  
New Construction or Saw Cut  
(GLCQPA)

### **INSTALLATION MANUAL**

Patent Pending



December 2024



## HOME SERIES H-350

### 4-POINT ANCHORING SYSTEM (GLCQPA)

### INSTALLATION

Patent Pending

### PARTS LIST

- 1 - Anchor Plate with bonding Lug & bolt
- 4 - 5/8" x 1" Stainless Steel Bolts
- 4 - 6" Anchoring Rods
- 4 - Plastic Caps

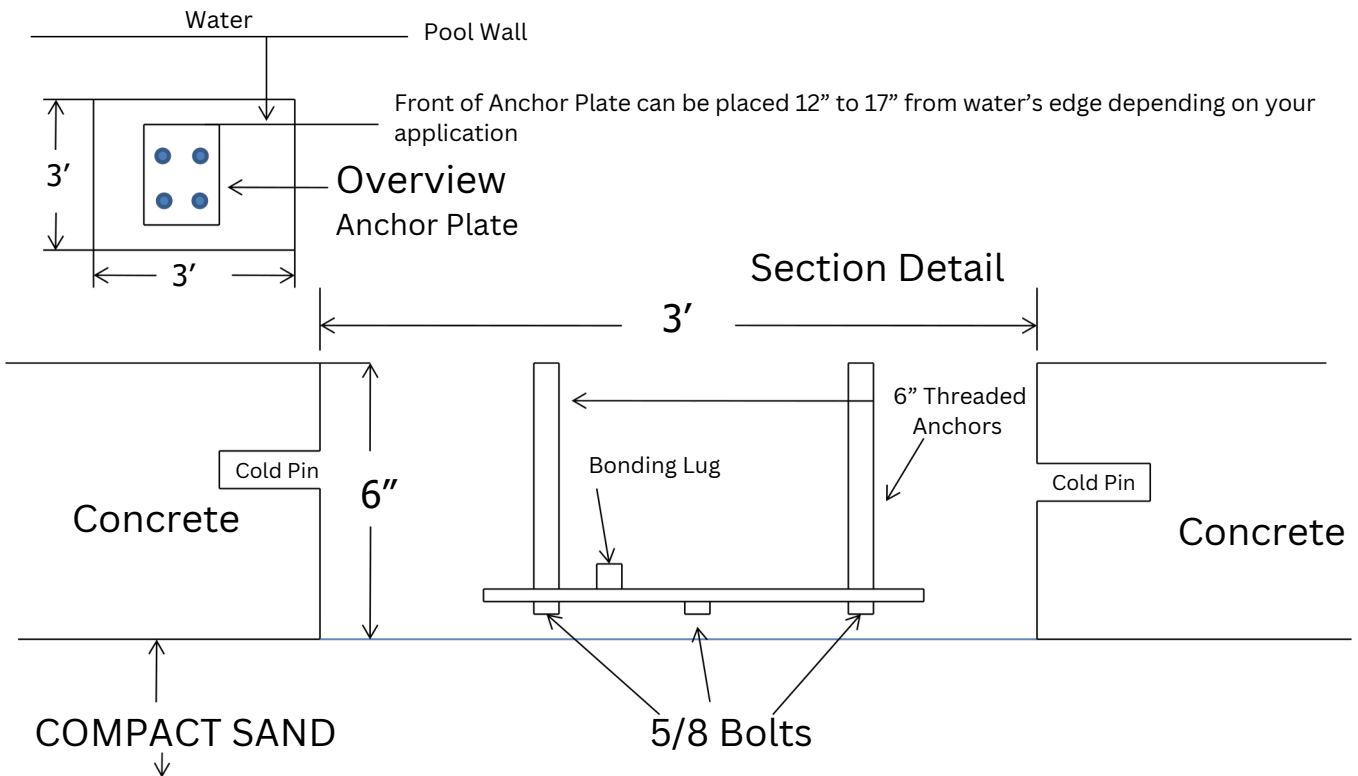
### ANCHORING PLATE, ANCHORS & BONDING LUG



5/8" x 1" Bolts



## HOME SERIES 4-POINT ANCHORING SYSTEM (GLCQPA)



Optimal placement of the anchor system is 13" from the front of the anchor plate to water's edge.

Attach copper wire to the bonding lug and then to your bonding grid.

Cold Pins should be 1/2" rebar 6" to 8" long

NOTE: Make sure your anchor plate is level and square with your pool's edge.

## INSTALLATION INSTRUCTIONS

**Step 1:** Determine the location for installation (Make sure all ADA requirements are met. See pg. 4).

**\*NOTE:** The installation of Global Pool Products' anchor systems are a guideline of minimum requirements. Some states or municipalities may have local codes or ordinances that require additional steps. Please double check these codes and ensure they are met.

**Step 2:** Make sure that all the parts are present (Refer to the parts list on pg. 13)

**Step 3:** At the determined location for installation, chalk out a 3' x 3' area prior to cutting out the concrete. Refer to overview - the front of the anchor plate must be 12" to 17" from the water's edge and 6" deep.) For new construction, the concrete must be 6" deep with a 1/2" reinforcing rod, minimum of 18" grid.

**Step 4:** Once the 3' X 3' area is cut out, make sure you drill in the inner wall of all 4 sides of the area (refer to the section detail) for the purpose of cold pinning the new concrete to the old concrete. Use 1/2" rebar, 6" to 8" in length.

**Step 5:** Attach the 3 - 6" threaded anchors with the 5/8" x 1" bolts (included) to the Anchor Plate and tighten.

**Step 6:** Place the anchor plate in the area, ensuring that the front of the anchor plate is 12” to 17” from the water’s edge and that the arrow on the anchor plate’s decal is pointing to the water’s edge (refer to overview.) A key element is to make sure that the anchor plate is level and square with the pool so that your Home Series Lift sits properly on the deck.

**Step 7:** Bonding the unit – The bonding lug is included with the anchor plate (furthest point from the pool wall on the anchor plate) locate the bonding lug, connect the bonding lug to the bonding grid.

**Ensure all local codes and ordinances are met.**

**Step 8:** Pour in concrete, making sure to cover the holes in the threaded anchors so you don’t get concrete in the threads. The concrete should be a minimum of 4,000 PSI with reinforcing rod. Make sure that the tops of the threaded anchors are flush with the deck. Before you install your lift, make sure you let the concrete set for 48 hours.

**Step 9:** After the concrete has set for 48 hours, it’s time to install your lift. Place your Home Series Lift over the anchor holes, screw in the anchor bolts that are included and tighten down securely. Once you have completed the installation, please refer to the User’s Manual for safe operation.



## Drop in Anchor Home Series H-350 (GLCQDIA)



Pre-drilled holes on the base of the H-350

Hole for bonding wire and screw to attach bonding wire to base



Locate the 4 pre-drilled holes on the base of the lift. Position the lift so that the base of the lift is from 12" to 17" from the pools' edge. Mark the concrete so you will know where to drill. Remove the lift and set aside.

### You will need a 7/8" rock carbide drilling bit.

- Make sure you have accurately marked the hole locations to be drilled and the square hole in the base where the bonding wire needs to come through. The holes must be 2 1/2" deep. Run the copper bonding wire to come through the square hole you previously marked
- Clean holes with pressurized air or vacuum.
- Administer Epoxy into each hole prior to inserting the drop in anchor.
- Drive the anchor flush with the surface of the concrete .
- Expand the anchors with the setting tool (provided). Anchor is properly expanded when shoulder of the setting tool is flush with the top of the anchor.
- Position the lift back in place and aligned with the holes.
- Insert drop in anchor bolts and tighten.





## ASSEMBLY MANUAL Home Series Lifts



December 2024



## ASSEMBLY STEPS Home Series Lifts



Main Components - Lift



Seat Tube

Your new Home Series Lift has an adjustable seat tube. You can install it to the height that you prefer. Line up the seat tube between the two guides in the bracket. This should be done so the lower portion of the seat tube points away from the lift. Slide in the two bolts through the bracket and seat tube. DO NOT install the two nuts at this time as you may need to adjust the height of the seat once it is installed.



## **INSTALLATION MANUAL (Foot rest Optional)**

### **SEAT AND FOOT REST PARTS LIST**

- 1 - Seat
- 1 - Foot Rest
- 2 - Arm Rests
- 1 - Seat Belt & Buckle
- 1 - ½" x 2 ¾" Securing Bolt
- 3 - 5/16 x 3" Attaching Pin with lock nut
- 1 - 5/16 x 2" Foot Rest attaching bolt w/ nut



## INSTALLATION STEPS



Picture A

**Step 1:**

Unpack your custom seat (picture A). Optional Items will consist of:

- Foot Rest and Tube
- 3- 5/16" x 3" Bolt with Lock nut



## INSTALLATION STEPS



Picture A



Picture B

### **Step 2:**

Align your custom seat (Picture A), with 3 pre-drilled holes as shown in Picture B.

### **Step 3:**

Once you have the seat in place, take one 5/6" x 3" bolt and slide it through the pre-drilled holes (Picture B). Once you have inserted the bolt all the way through, apply the locking nut (supplied) and wait until all three bolts are in place before tightening any nuts.



## INSTALLATION STEPS (CONTINUED)



Picture D



Picture E

### STEP 4:

Locate the other two 5/16" x 3" securing bolts (supplied.) Insert the bolt through the pre-drilled seat and tube holes (Picture D & E.) Once you have the bolts inserted, secure the installation with the provided lock nuts. Check the seat height and adjust it to your needs. Once it is in the correct position, install the two nuts on the upper seat tube and tighten.



Picture F

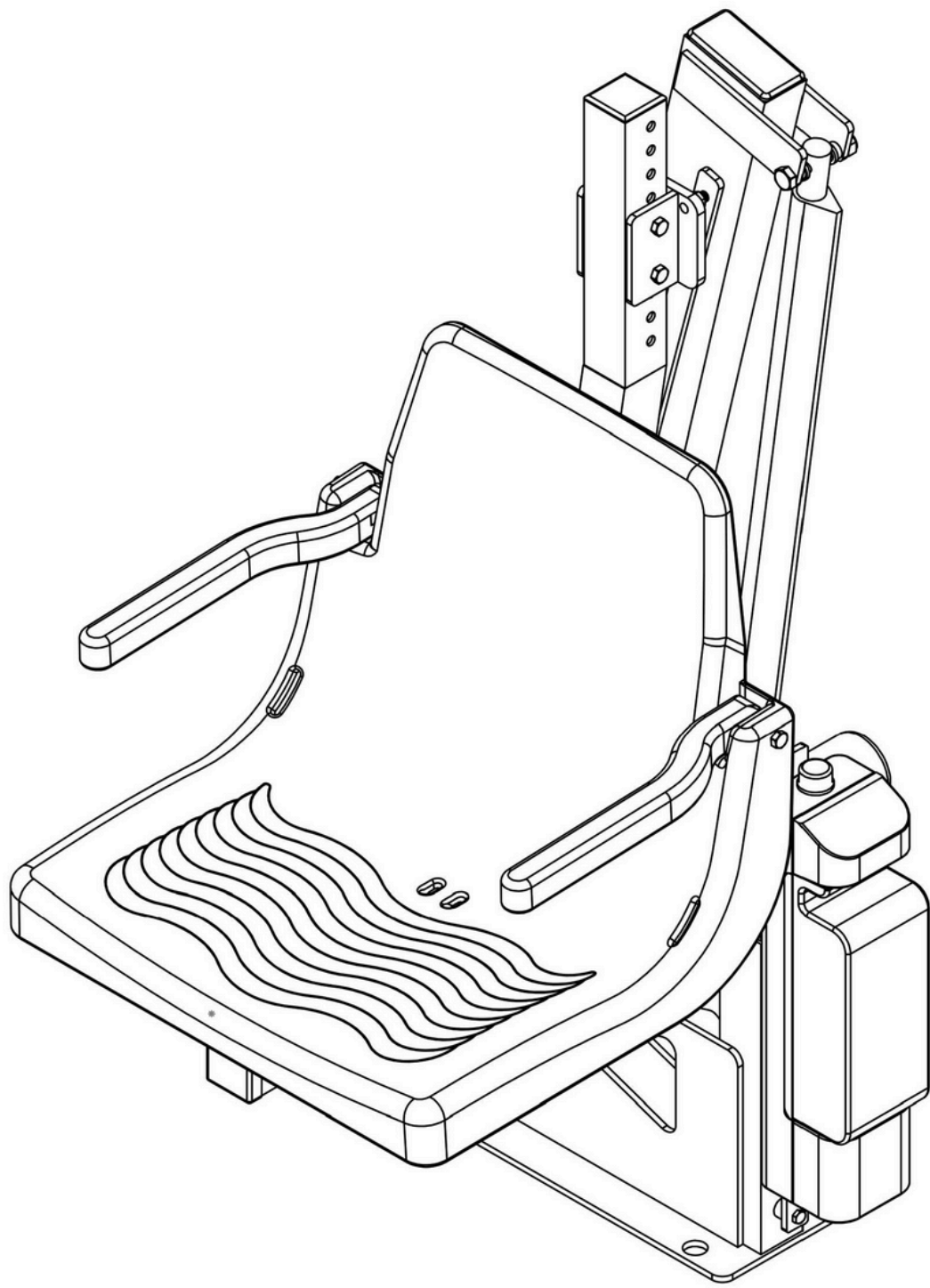


Picture G

### STEP 5:

As shown in Picture F, slide the foot tube through the foot rest sleeve and line the hole to the slot. Locate the 5/16" x 2" bolt and insert into the pre-drilled holes as shown in Picture G to secure the foot rest to the lift. Place the lock nut on the bolt and tighten. Once completed, you are ready to use your Global Pool Products pool lift.

REV.	DESCRIPTION	DATE	APVD.
------	-------------	------	-------



SCALE: 1:6	REV: 100	DATE: 1/31/2017	DWR: B.E.
------------	----------	-----------------	-----------

WEIGHT: LBS	MACH WEIGHT: LBS	APVD BY: J.I.
-------------	------------------	---------------

DO NOT SCALE DRAWING  
UNLESS OTHERWISE SPECIFIED  
DIMENSIONS ARE IN INCHES  
TOLERANCES ARE:

X. = ±.125  
XX. = ±.062  
XXX. = ±.031

FRACTIONAL DIMENSIONS ±.125  
FILLET RADIUS .000 THRU +.094  
HOLES 200 THRU .015  
ANGLES ± 1 DEGREE

**PROPRIETARY AND CONFIDENTIAL**

THE INFORMATION CONTAINED IN THIS DRAWING IS THE SOLE  
PROPERTY OF Global Lift Corporation. ANY REPRODUCTION IN  
PART OR AS A WHOLE WITHOUT THE WRITTEN PERMISSION OF  
Global Pool Products IS PROHIBITED.



1330 Pigeon Rd.  
Bad Axe, MI 48413

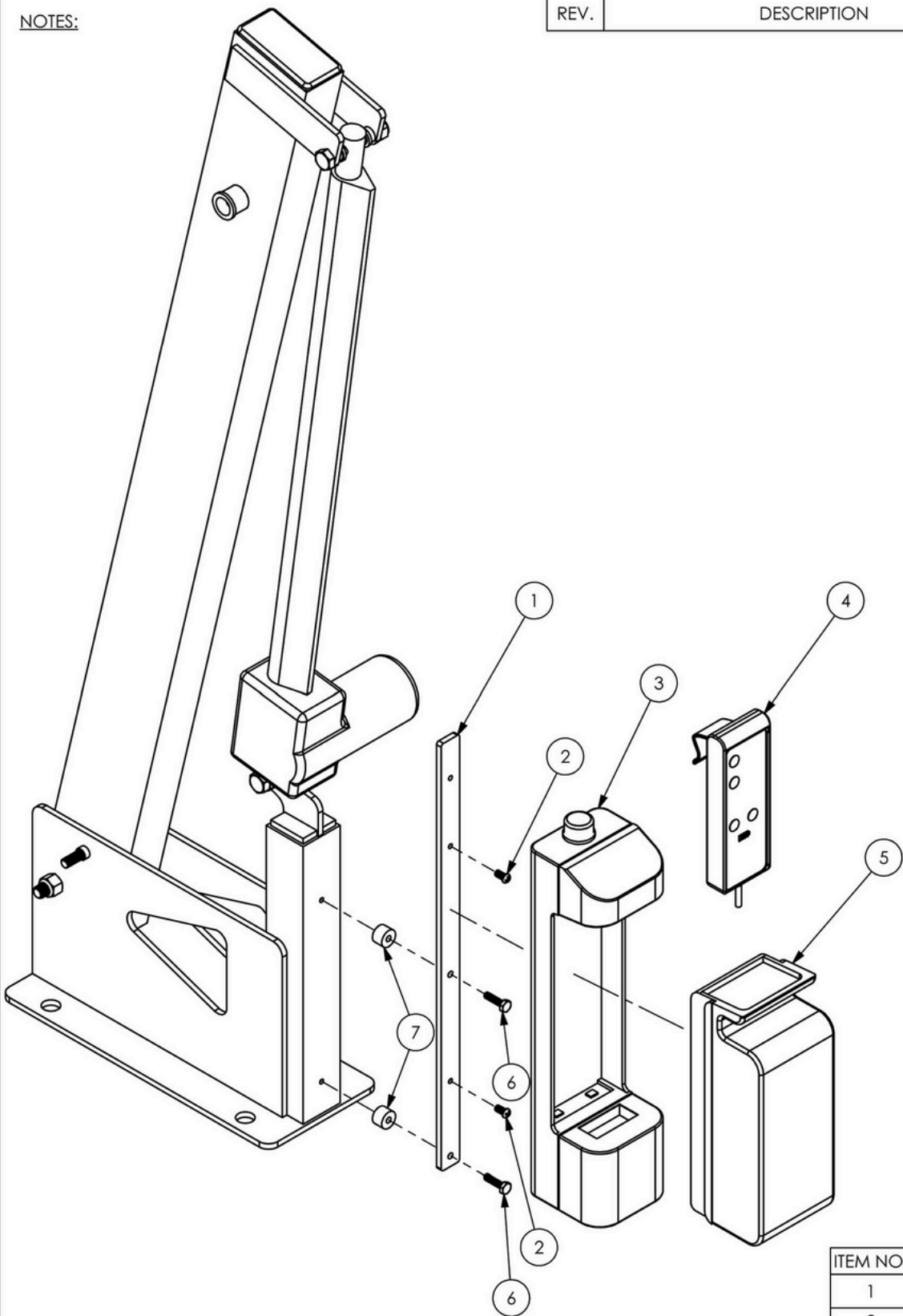
TITLE: <b>H-350 HOME SERIES</b>
--

DWG. NO. <b>COVER SHEET</b>
--------------------------------



NOTES:

REV.	DESCRIPTION	DATE	APVD.
------	-------------	------	-------



ITEM NO.	PART NUMBER	DESCRIPTION	QTY.
1	LGLCBP-6	BRACKET	1
2	RGLC25X.5BHB	BOLT	2
3	T5068-5	CONTROL BOX	1
4	T5068-4	HANDSET	1
5	T5068-2	BATTERY	1
6	BOLT25-20-1	BOLT	2
7	LGLCSPACER	SPACER	2

MATERIAL:

SCALE: 1:7	REV: 100	DATE: 4/29/2015	DWR: B.E.
WEIGHT: LBS	MACH WEIGHT: LBS	APVD BY: J.I.	



TITLE: **H-350 HOME SERIES**

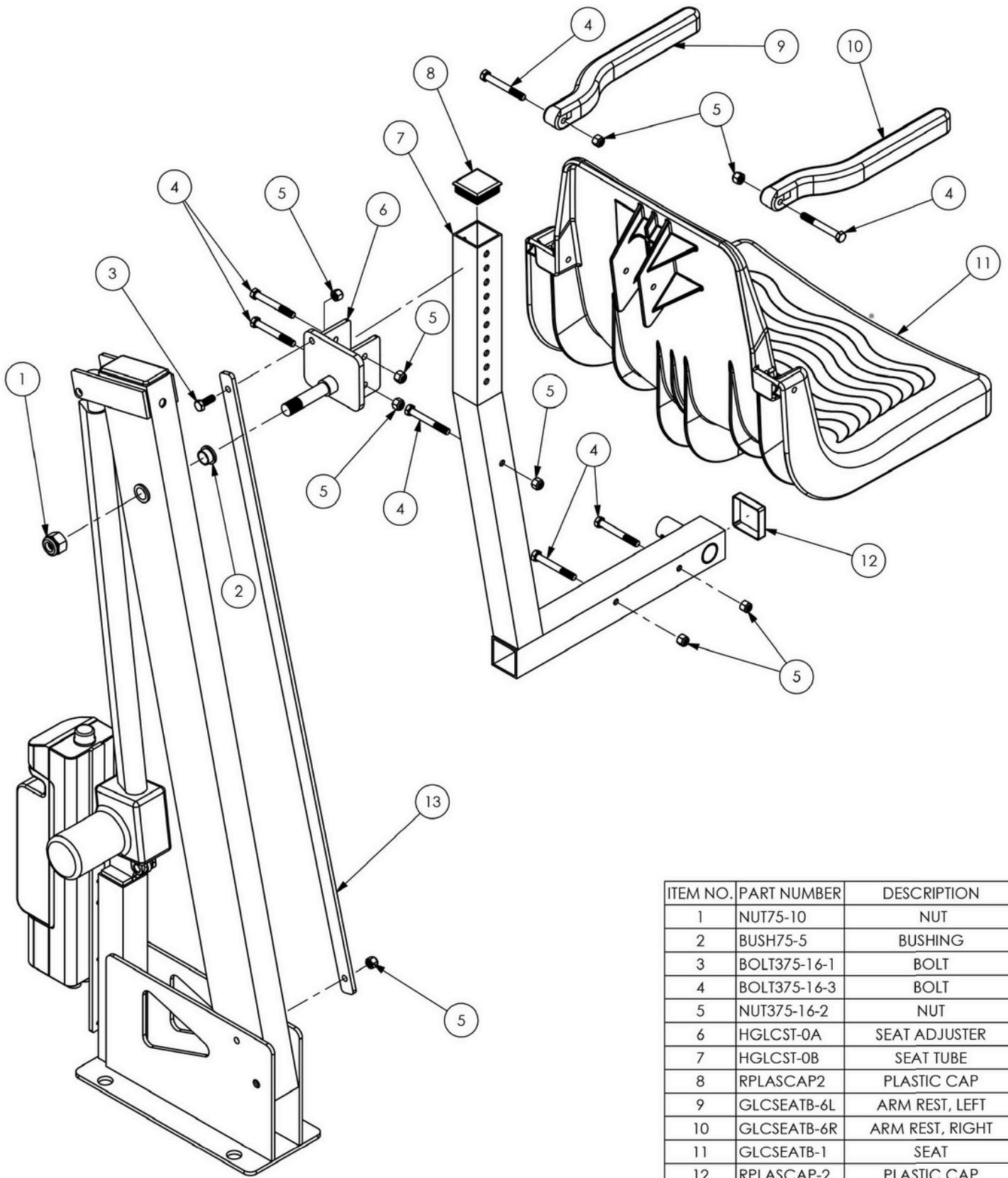
DO NOT SCALE DRAWING  
UNLESS OTHERWISE SPECIFIED  
DIMENSIONS ARE IN INCHES  
TOLERANCES ARE:  
X. = ±.125  
XX. = ±.062  
XXX. = ±.031  
FRACTIONAL DIMENSIONS ±.125  
FILLET RADI .000 THRU +.094  
HOLES .000 THRU .015  
ANGLES ± 1 DEGREE

**PROPRIETARY AND CONFIDENTIAL**  
THE INFORMATION CONTAINED IN THIS DRAWING IS THE SOLE  
PROPERTY OF Global Lift Corporation. ANY REPRODUCTION IN  
PART OR AS A WHOLE WITHOUT THE WRITTEN PERMISSION OF  
Global Pool Products IS PROHIBITED.

1330 Pigeon Rd. Bad  
Axe, MI 48413

DWG. NO. **CONTROL BOX & BATTERY**

REV.	DESCRIPTION	DATE	APVD.
------	-------------	------	-------



ITEM NO.	PART NUMBER	DESCRIPTION	QTY.
1	NUT75-10	NUT	1
2	BUSH75-5	BUSHING	1
3	BOLT375-16-1	BOLT	1
4	BOLT375-16-3	BOLT	7
5	NUT375-16-2	NUT	9
6	HGLCST-0A	SEAT ADJUSTER	1
7	HGLCST-0B	SEAT TUBE	1
8	RPLASCAP2	PLASTIC CAP	1
9	GLCSEATB-6L	ARM REST, LEFT	1
10	GLCSEATB-6R	ARM REST, RIGHT	1
11	GLCSEATB-1	SEAT	1
12	RPLASCAP-2	PLASTIC CAP	1
13	LGLCSS-1	SEAT LEVELER BRACKET	1

SCALE: 1:8    REV: 100    DATE: 1/31/2017    DWR: B.E.

WEIGHT: LBS    MACH WEIGHT: LBS    APVD BY: J.I.

DO NOT SCALE DRAWING  
UNLESS OTHERWISE SPECIFIED  
DIMENSIONS ARE IN INCHES  
TOLERANCES ARE:  
X. = ±.125    FRACTIONAL DIMENSIONS ±.125  
XX. = ±.062    FILET RADII .000 THRU .125  
XXX. = ±.031    HOLES .000 THRU .015  
                  ANGLES ± 1 DEGREE

PROPRIETARY AND CONFIDENTIAL  
THE INFORMATION CONTAINED IN THIS DRAWING IS THE SOLE  
PROPERTY OF Global Lift Corporation. ANY REPRODUCTION IN  
PART OR AS A WHOLE WITHOUT THE WRITTEN PERMISSION OF  
Global Pool Products IS PROHIBITED.



1330 Pigeon Rd.  
Bad Axe, MI 48413

TITLE:                    H-350  
                                 HOME SERIES  
  
DWG. NO.                SEAT & SEAT TUBE