

ROTATIONAL SERIES R-375 LIFT RETRO-FIT SLEEVE ANCHORING METHOD INSTALLATION MANUAL



Prior to installing, please make sure you have filled out a Deck Configuration Form to make sure you have the correct lift that fits Your application.

RETRO-FIT SLEEVE ANCHORING METHOD

R-375

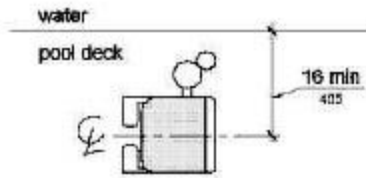
ROTATIONAL SERIES LIFT

PACKING LIST

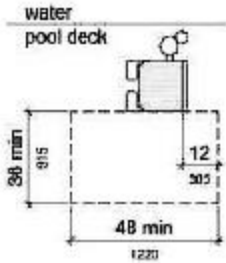
- 1 – Anchor Sleeve w/ Base
- 1 – Plastic Cap
- 1 – Bonding Lug w/ nut and bolt

ADA GUIDELINES FOR POOL LIFT PLACEMENT

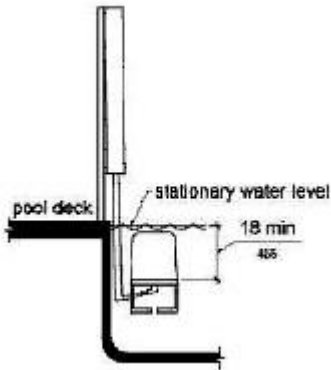
- Pool Lift Location. Pool lifts shall be located where the water level does not exceed 48 inches (1220 mm).
Seat Location. In the raised position, the centerline of the seat shall be located over the deck and 16 inches (405 mm) minimum from the edge of the pool. The deck surface between the centerline of the seat and the pool edge shall have a slope not steeper than 1:48.



- Clear Deck Space. On the side of the seat opposite the water, a clear deck space shall be provided parallel with the seat. The space shall be 36 inches (915 mm) wide minimum and shall extend forward 48 inches (1220 mm) minimum from a line located 12 inches (305 mm) behind the rear edge of the seat. The clear deck space shall have a slope not steeper than 1:48.



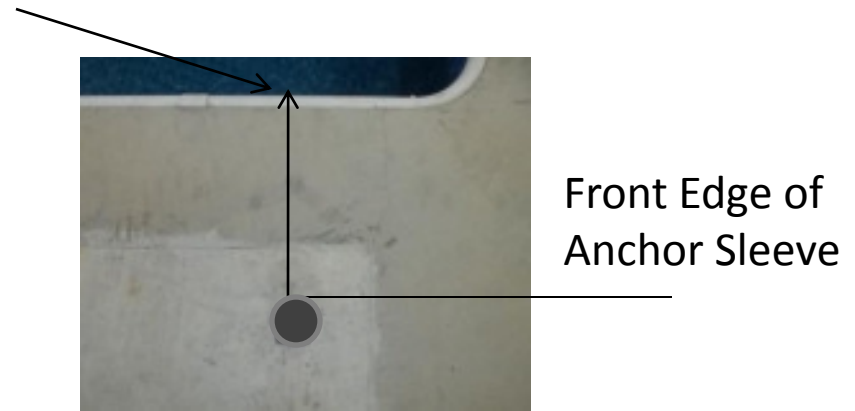
- Submerged Depth. The lift shall be designed so that the seat will submerge to a water depth of 18 inches (455 mm) minimum below the stationary water level.



CAUTION: Minimum anchor distance from a vertical obstacle is 11", if Closer The lift will hit while in operation



Picture A



Picture B

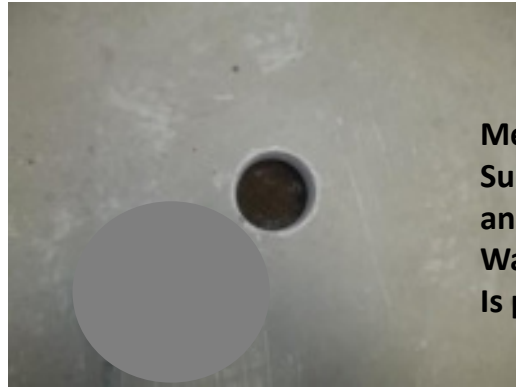
STEP 1: Locate the retro-fit anchoring sleeve (as shown above) picture A

- Once you determine where your lift is going to be located at your pool, place the anchor sleeve down so you can mark a circle around the base on the concrete where you will need to drill the hole. NOTE: From the pool's edge or if an obstacle is present before the water the minimum distance is 11" and the maximum is 36" from the front of the anchor sleeve. See picture B

*****NOTE:** The installation of Global Lift Corp's anchor system's are a guideline of minimum requirements. In some states or municipalities they may require additional steps due to their local codes or ordinances.***

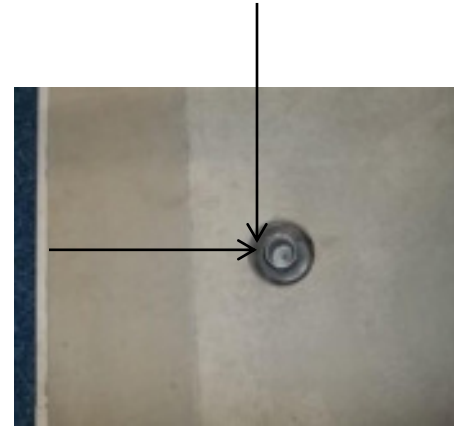
R-375

Front edge of anchor sleeve or an Obstacle



Measure Distance to make
Sure It's 11" minimum
and 36" maximum from the
Water's edge or if an obstacle
Is present before the water

Picture A



Picture B

Step 2: You will need a 5" diameter core drilling bit.

- Make sure you have accurately marked your hole location to be drilled. After drilling Your hole (picture A), it must be 6" deep and flat on the bottom of the hole (shown above). Also Double check your measurements they should be: Place your anchor sleeve in the hole And make sure the front edge of the sleeve is in between 11" minimum distance and 36" Maximum distance from pools edge or if an obstacle is present before the water. (picture B) Then Connect the bonding lug to the bonding Grid. Please check your local codes and ordinances are met.



STEP 3 : Cementing the anchor sleeve in the concrete.

- You will need 10 lbs of Quick dry Anchoring Cement (Commercial Grade Quikrete Exterior Use Anchoring Cement) to complete the installation. You can purchase at any hardware store in your area. Read the label and follow manufacturer's instructions.
- Start pouring into the hole evenly until you fill it up, make sure not to overfill the Hole so that it does not create more work to scrap excess concrete off.
- Let the concrete set for 24hrs, sand stone to smooth the finish. Make sure the anchor sleeve is flush with the concrete
- You are now ready to install your Rotational Series lift.